

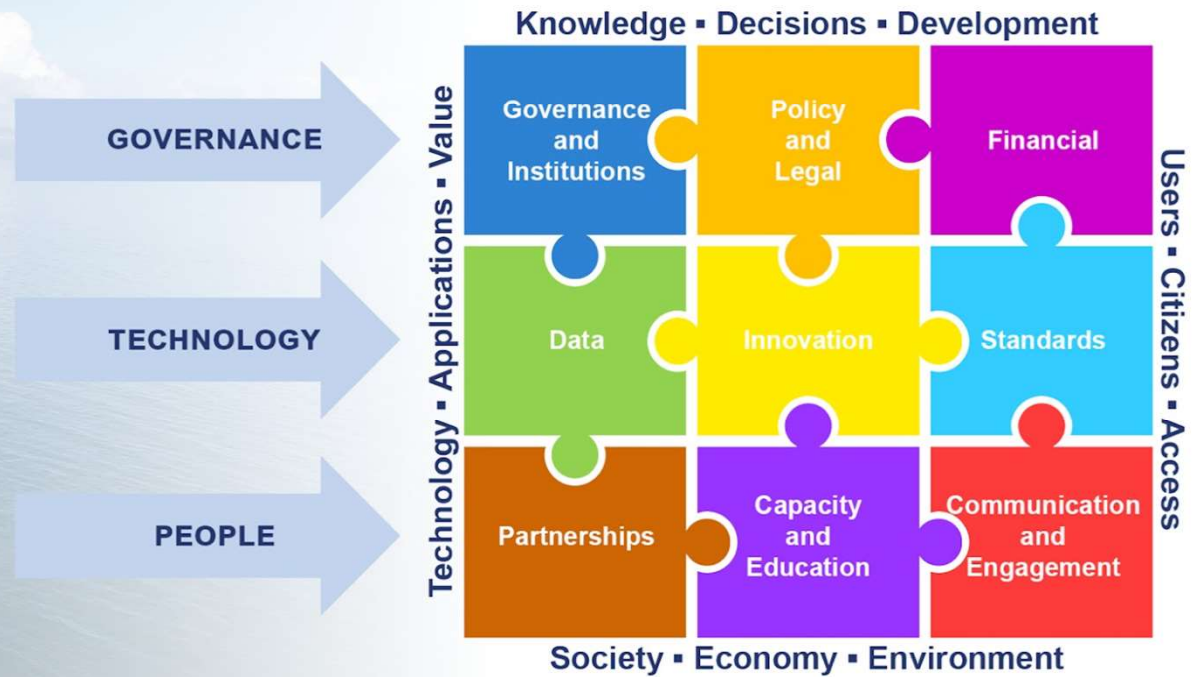
IGIF-H

**Operational Framework for
Integrated Marine Geospatial
Information Management**

Working Group on Marine
Geospatial Information



The Integrated Geospatial Framework provides a basis and guide for developing, integrating, and strengthening geospatial information management.



Anchored by nine Strategic Pathways, the Framework is a mechanism for articulating and demonstrating national leadership in geospatial information, and the capacity to take positive steps.

NOW EXHIBITING
AT CDL GREEN GALLERY

A Climate Action Exhibition Jointly Presented By:



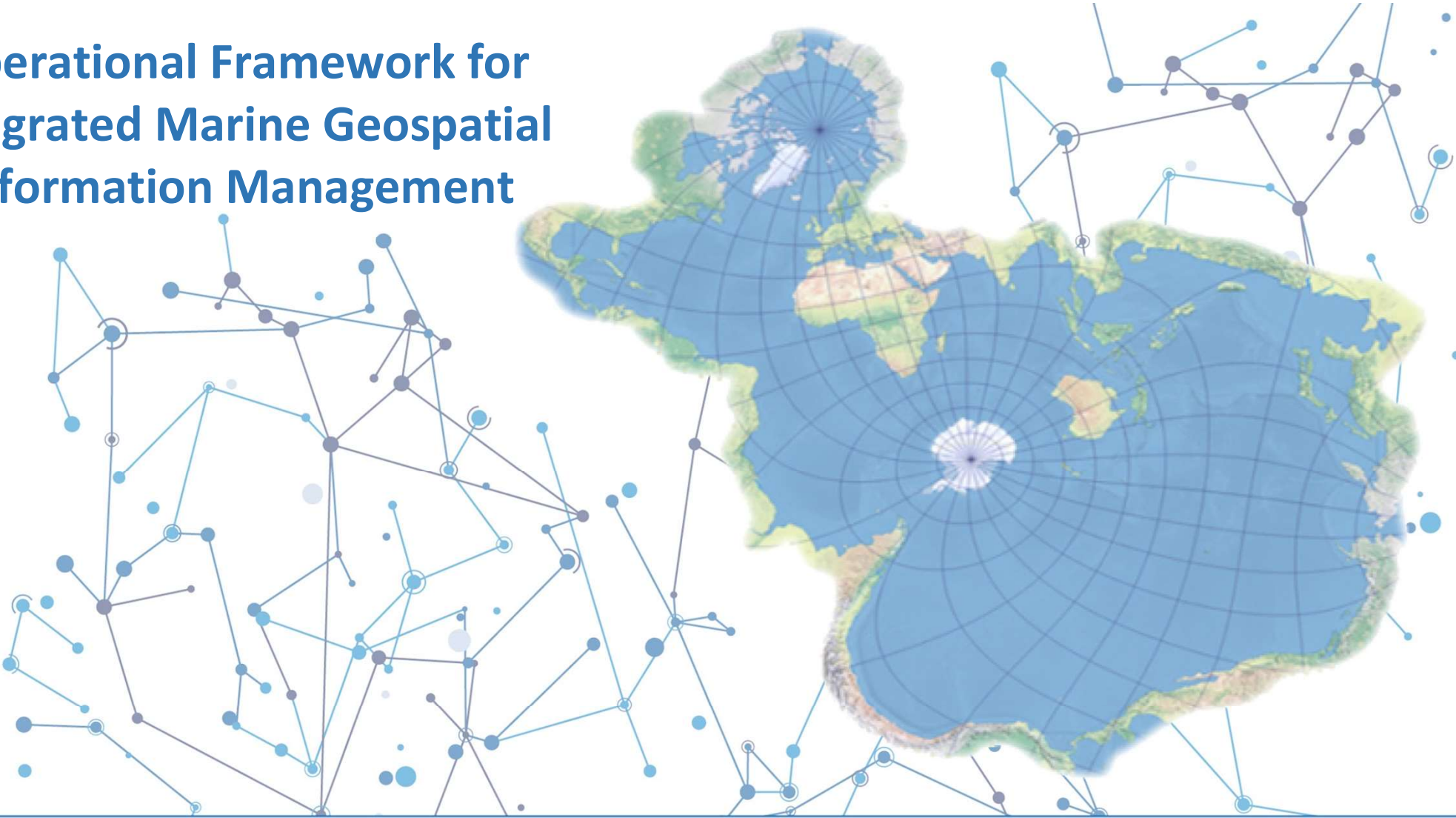
CHANGE THE PRESENT, SAVE THE OCEAN.

CLIMATE CRISIS IS AN
OCEAN CRISIS

FREE ADMISSION
Open Daily* | 9am to 6pm
*Closed every last Tuesday of the month



Operational Framework for Integrated Marine Geospatial Information Management



Integrated Geospatial Information Framework-Hydro (IGIF-H) High Level

Two part document
Part One – background, challenges and introduction – Our desired Future
Part Two – broken down by IGIF Strategic pathways for the water domain
Scope – Oceans, Seas, rivers, waterways/watercourses, lakes, inland waters, wetlands, glaciers...

- Part 1**
- Overview
 - Introduction and Background
 - Our Desired Future
 - Mission, Vision, and Goals

- Part 2**
- A Value Proposition for the Marine Domain
 - Introduction
 - Governance and Institution
 - Legal and Policy
 - Data
 - Standards
 - Partnerships
 - Capacity and Education
 - Communication and Engagement

our desired future

The marine domain, primarily operated by hydrographic offices, becomes fully integrated with other geo-information sectors, including land, statistical, meteorologic, oceanographic, and others. This integration allows the full digital information ecosystem to take advantage of coordinated services and standards, joint collection and management of data for multi-use purposes, coordinated data distribution and access, cross-thematic data integration, commitment to cross-sector capacity development, and shared (cohesive) value propositions.

Vision

Integrating water into the global geospatial information
infrastructure ecosystem

Mission

To provide practical guidance that countries can use to enhance the availability and accessibility of marine geospatial information, inclusive of all water-related jurisdictions, and to realize the greatest benefit from their integrated geospatial information management arrangements for the betterment of society, environment, and economy. This Guide expands upon the IGIF's nine strategic pathways where considerations for water might be different or require specific attention.

The idea of this Guide is not to replicate the IGIF but to:

- Provide practical advice and promote best practices and broad perspectives
- Support any body, state, or organization
- Assist implementers of the IGIF Strategic Pathways
- Establish and/or maintain a national geospatial framework
- Ensure the inclusion of water in that framework

Goals

Build Data Partnerships, Increase the use of international Standards, Increase Capacity Development Opportunities, Ensure Data Interoperability, Improve Data Accessibility and Availability, Provide Guidance for Emerging Marine Geospatial Programs.



all nine pathways
on the table

**POLICY
AND
LEGAL**



FINANCIAL

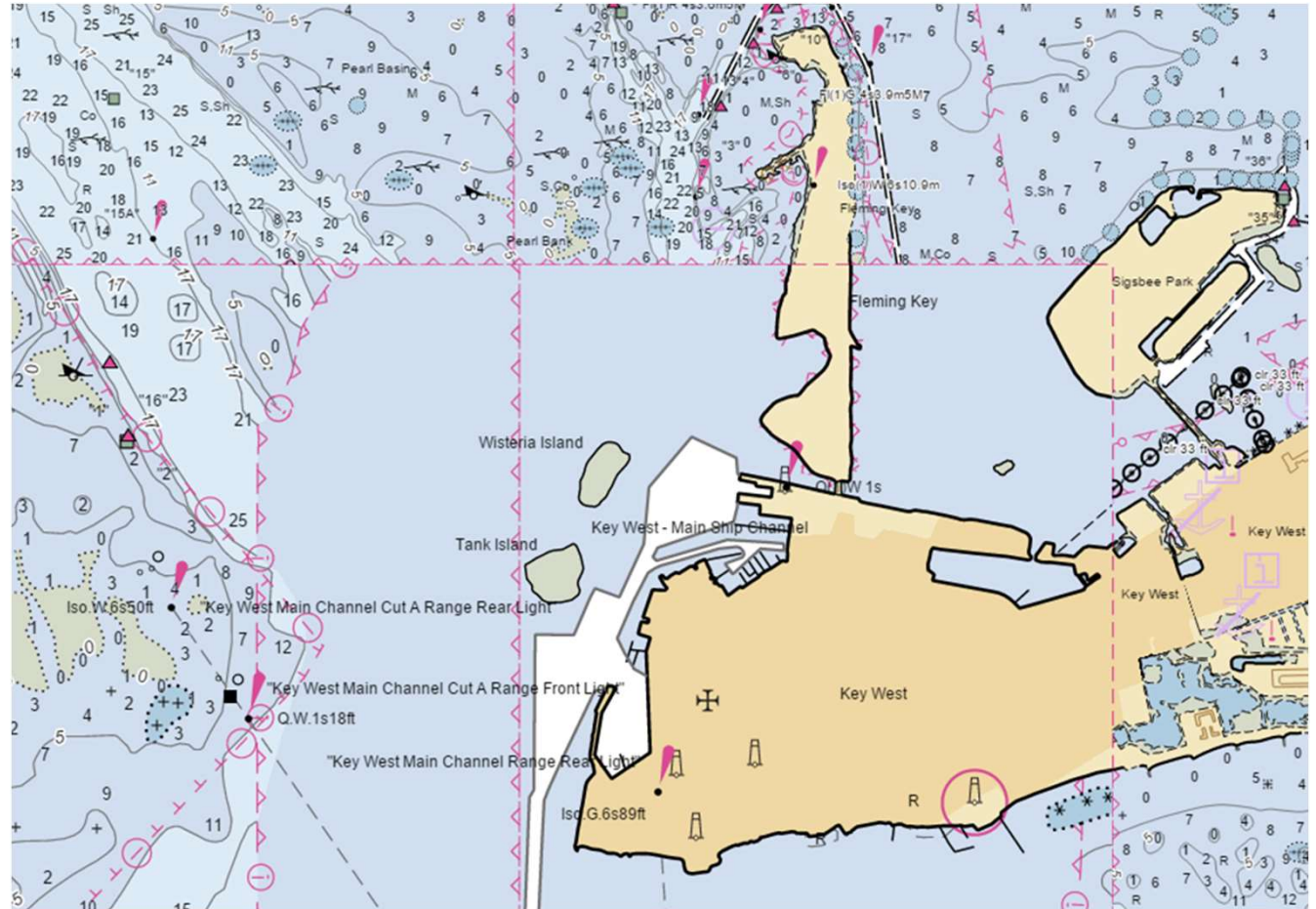




all nine pathways
on the table

Marine Transportation – Nautical Charting and Beyond

- Foundational component of transportation infrastructure
- Improves safety and efficiency for maritime commerce
- Protects the environment







Thank You

John.Nyberg@noaa.gov



UN-GGIM
UNITED NATIONS INITIATIVE ON
GLOBAL GEOSPATIAL
INFORMATION MANAGEMENT